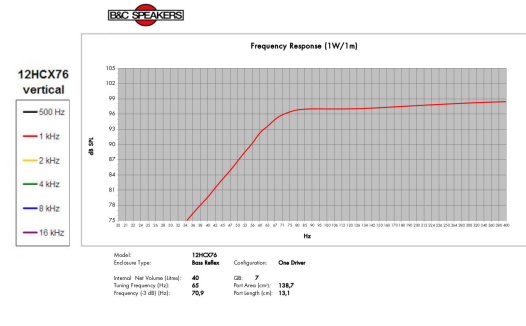
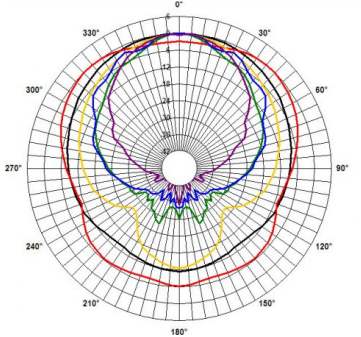
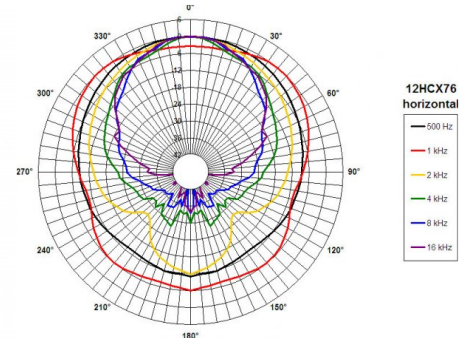
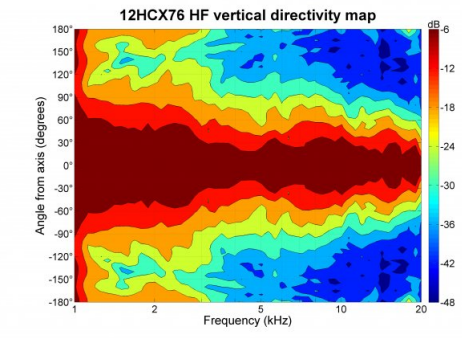
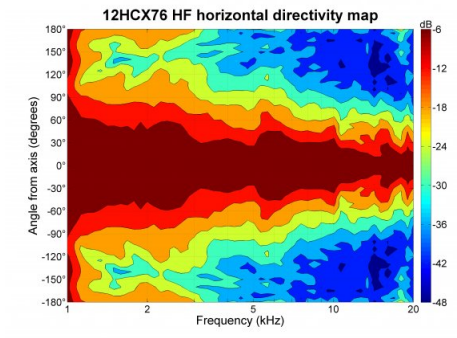
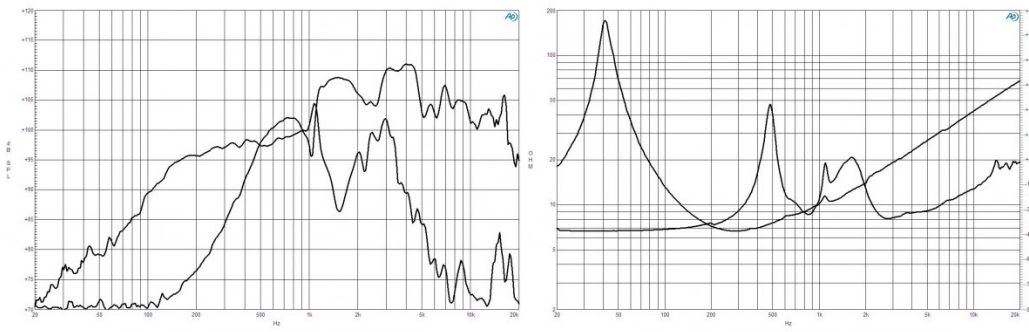




700 W continuous program power capacity
 60°x40° nominal coverage
 45 - 18000 Hz response
 99 dB sensitivity
 Single Neodymium magnet assembly
 Modified exponential horn flare for improved acoustic loading and controlled coverage
 33 mm (1.3") HF unit exit diameter



GENERAL

Nominal Diameter	320 mm (12 in)
Nominal Impedance	8 Ω
Frequency Range	45 Hz - 18000 Hz
Dispersion Angle	60 ° Included by -6 dB down points.

DESIGN

Magnet Material	Neodymium Ring
Woofer Cone Treatment	WP Waterproof Front Side

SERVICE KITS

HF replacement-diaphragm	MMD3BTN8M
LF recone-kits	RCK12HCX768

SPECIFICATIONS LF UNIT

Sensitivity	99 dB Applied RMS Voltage is set to 2.83V.
Nominal Power Handling	350 W 2 hours test made with continuous pink noise signal within the range Fs-10Fs. Power calculated on rated minimum impedance. Loudspeaker in free air.
Continuous Power Handling	700 W Power on Continuous Program is defined as 3 dB greater than the Nominal rating.
Voice Coil Diameter	76 mm (3 in)
Winding Material	Copper
Flux Density	1.15 T
Nominal Diameter	320 mm (12 in)
Nominal Impedance	8 Ω
Minimum Impedance	6.7 Ω
Former Material	Glass Fibre
Winding Depth	16.5 mm (0.65 in)
Magnetic Gap Depth	8 mm (0.31 in)
Woofer Cone Treatment	WP Waterproof Front Side

PARAMETERS

Fs	42 Hz
Re	5 Ω
Qes	0.2
Qms	8
Qts	0.19
Vas	120 dm ³ (4.2 ft ³)
Sd	522 cm ² (80.9 sq ²)
η0	4.1 %
Xvar	6 mm
Mms	47 g
Bl	17.6 Tm
Le	0.8 mH
EBP	210 Hz

SPECIFICATIONS HF UNIT

Sensitivity	107 dB Applied RMS Voltage is set to 2.83V.
Nominal Power Handling	80 W 2 hour test made with continuous pink noise signal within the range from the recommended crossover frequency to 20 kHz. Power calculated on rated minimum impedance. Loudspeaker in free air.
Continuous Power Handling	160 W Power on Continuous Program is defined as 3 dB greater than the Nominal rating.
Voice Coil Diameter	75 mm (3 in)
Winding Material	Aluminium
Flux Density	1.9 T
Nominal Diameter	320 mm (12 in)
Nominal Impedance	8 Ω
Minimum Impedance	8 Ω
Recommended Crossover	1.2 kHz 12 dB/oct. or higher slope high-pass filter.
Inductance	0.14 mH
Diaphragm Material	Titanium

MOUNTING AND SHIPPING INFO

Overall Diameter	315 mm (12.4 in)
Bolt Circle Diameter	298 mm (11.7 in)
Baffle Cutout Diameter	283 mm (11.14 in)
Depth	168 mm (6.6 in)
Flange and Gasket Thickness	14 mm (0.55 in)
Net Weight	5.3 kg (11.68 lb)
Shipping Units	1 pcs
Shipping Weight	6.6 kg (14.55 lb)
Shipping Box	425x425x224 mm (16.73x16.73x8.82 in)